

Comfort sector



Shopping centre entrance



Mall passageway



DIY centre entrance

High-end protection of customer zones

Whether shopping mall, DIY centre, hotel lobby or airport lounge – the feel-good factor of your clients is the highest priority.

arwus air separation units protect against cold air ingress, heat loss and drafts, thereby assuring a noticeably comfortable tempering of customer zones.

Unit performance is determined project-specifically with air-stream design velocity selected on basis of draft strength to be counteracted in passageway. Depending on application, two precisely-orientated vertical arwus diffusers, standing left/right of entrance, ensure optimally directed air distribution. The resultant planar airstreams get deflected to form a dam in the middle of passage, impeding cold air ingress. Comfort in customer zone is assured by heating integrated within fan module.

arwus air separation stands for technical knowhow and sophisticated design. Whether plastic, glass, stainless steel or marble – arwus air separation units lend themselves, in every building sphere, to bespoke integration, rapidly being expressed as design features.

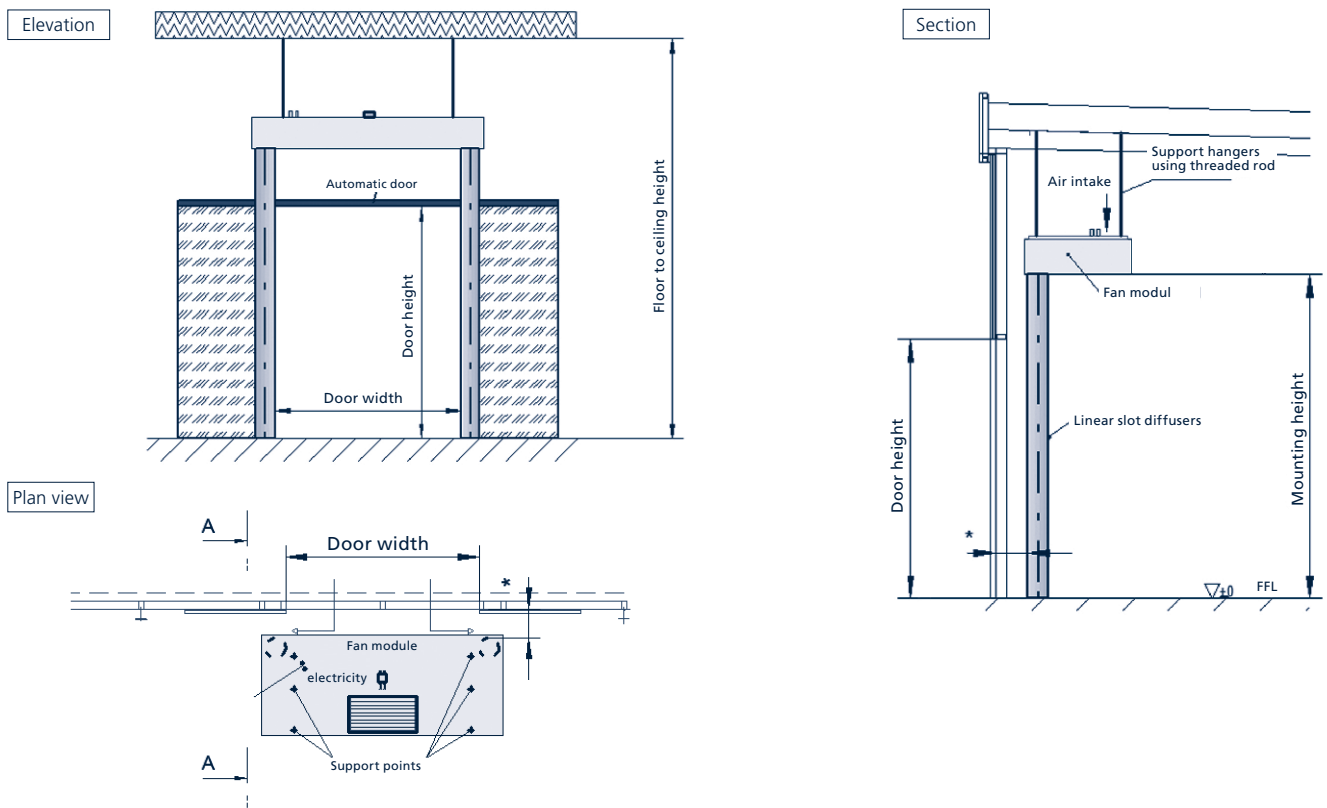
Your benefits

- Efficient and convenient separation of air-conditioned client areas
- Prevention of drafts/chilling of shop and customer zones
- High energy-savings
- Integration within existing design

Applications

- Shopping malls
- Supermarkets or DIY Centres
- Stations
- Airports
- Hospitals
- and much more

Example: arvus air separation type 2VEC/WW, installation drawing



Standard values

- Door size: W = 2400/H = 2500 mm
- Draft constant (DC) = 2.0

arvus-diffusers

- Left/right of door opening, standing (Ø 250 mm)
- Colour: selectable, Material: plastic, H = max. 5000 mm

Fan module

- (WxHxD): 3000x515x1250 mm
- Weight: approx. 250 kg
- Casing: aluminium
- Edge profiles: anodized aluminium
- Colour: white or to customer specification

Controls

- Fan speed preset by stepless variable speed controller
- Remote ON/OFF
- Fault signal
- 2-stage operation: door CLOSED heating mode/ door OPEN air separation mode
- operating unit: clock thermostat

References



FLUGHAFENZÜRICH

